

**Back to School!**

# August 2019



Mon	Tue	Wed	Thu	Fri
			1	2
5 <i>Professional Learning Pre Planning Pre K– 12th</i>	6 <i>Professional Learning Pre Planning Pre K– 12th</i>	7 <i>Professional Learning Pre Planning Pre K– 12th</i>	8 <i>Professional Learning Pre Planning Pre K– 12th</i>	9 <i>Elementary Registration/ Meet the Teacher 12:00 pm til 6:00 pm</i>
12 <i>First Day of School All Students</i>	13 <i>FACULTY MEETING</i>	14	15	16
19	20 <i>FACULTY MEETING Gradebook Training 2:30 –4:00</i>	21	22	23 <i>PBIS PEP RALLY 1:30 Fall Picture Day (Kids in uniform)</i>
26	27	28	29	30

**Go Team!**

# September 2019



Mon	Tue	Wed	Thu	Fri
2 <i>Labor Day Holiday</i>	3 <i>Title I OPEN HOUSE</i> 5:00-7:00 <i>PROGRESS REPORT OPEN</i>	4 <i>Title I 9:00-10:00</i> <i>Hearing &amp; Vision</i> <i>Screening</i>	5	6
9 <i>PROGRESS REPORT</i> <i>CLOSED</i>	10 <i>PROGRESS REPORTS</i>  <b>National Arts in Education Week</b> <i>FACULTY MEETING</i>	11	12	13
16	17 <i>Constitution and</i> <i>Citizenship Day</i>	18	19 <i>Grandparent's Day</i> <i>Luncheon (PreK-2nd)</i>	20 <i>Grandparent's Day</i> <i>Luncheon (3rd-5th)</i>
23	24  <i>FACULTY MEETING</i>	25	26 <i>PICTURE DAY MAKE-UP</i>  <i>(Kids in uniform)</i>	27
30 <i>BWES Book Fair</i>				



# October 2019



Mon	Tue	Wed	Thu	Fri
30 <i>BWES Book Fair</i>	1 <i>BWES Book Fair</i>	2 <i>BWES Book Fair</i>	3 <i>BWES Book Fair</i>	4 <i>BWES Book Fair</i>
7	8 <i>FACULTY MEETING</i>	9	10	11 <i>1st Quarter Ends</i>
14 <i>Student/Staff Holiday</i>	15 <i>REPORT CARD OPEN</i> <i>Professional Learning Day</i>	16 <i>Boss's Day</i> <i>K-2 Conferences</i>	17 <i>K-2 Conferences</i>	18 <i>PBIS Celebration</i> <i>K-2 Conferences</i>
21 <i>REPORT CARD CLOSED</i>	22 <i>3-5 Conferences</i> <i>REPORT CARDS HOME</i> <i>FACULTY MEETING</i>	23 <i>3-5 Conferences</i> <i>VEHICLE DAY</i>	24 <i>3-5 Conferences</i>	25 <i>CLASSROOM AWARDS</i>
28	29	30	31	
<i>Red Ribbon Week</i>				



# November 2019



Mon	Tue	Wed	Thu	Fri
<b>Family Engagement Month</b>	Fall backward 1 hour on Sunday, November 3rd			1
4	5 <i>PROGRESS REPORT OPEN</i>  <i>FACULTY MEETING</i>	6	7 <i>FALL FESTIVAL</i> 5:00-7:00	8
11 <i>VETERANS' DAY PROGRAM</i> 9:00  <i>PROGRESS REPORT CLOSED</i>	12  <i>PROGRESS REPORT</i>	13	14	15  <i>AUBURN-GEORGIA TAILGATE</i>
18	19  <i>FACULTY MEETING</i>	20	21	22
25	26	27	28	29
<i>Thanksgiving Holidays</i>				



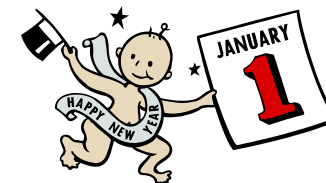
# December 2019



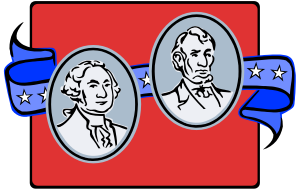
Mon	Tue	Wed	Thu	Fri
2	3	4	5	6
9	<i>FACULTY MEETING</i>	11	<i>LITERACY NIGHT 5:00-7:00</i>	<i>REPORT CARD OPEN</i>
16	17	18	<i>SCHOOL-WIDE HOLIDAY PARTIES</i>	<i>REPORT CARD CLOSE  POLAR EXPRESS</i>
23	24	25	26	27
<i>Christmas Holidays</i>				
28	29	30	31	
<i>Christmas Holidays</i>				



# January 2020



Mon	Tue	Wed	Thu	Fri
		1	2	3 <i>2nd Quarter Ends</i>
<b><i>Christmas Holidays</i></b>				
6  <i>Student Holidays Professional Learning Days</i>	7 <b><i>FACULTY MEETING</i></b>  <i>Classes Resume REPORT CARDS</i>	8	9	10  <i>PBIS Celebration</i>
13	14	15	16  <b><i>SEMESTER K-2 AWARDS 9:00-10:00</i></b>	17  <b><i>SEMESTER 3-5 AWARDS 9:00-10:00</i></b>
20  <i>MLK Holiday</i>	21  <b><i>FACULTY MEETING</i></b>	22	23	24  <b><i>DONUTS WITH DADS</i></b>
27	28  <b><i>PROGRESS REPORTS OPEN</i></b>	29	30	31



# February 2020



Mon	Tue	Wed	Thu	Fri
3 <b>PROGRESS REPORTS CLOSED</b>	4	5	6	7
10 <b>Book Fair</b>	11 <b>FACULTY MEETING</b> <b>PROGRESS REPORTS</b> <b>Book Fair</b>	12 <b>Counselor's Week</b> <b>Book Fair</b>	13 <b>MATH AND SCIENCE</b> <b>NIGHT 5:00-7:00</b> <b>Book Fair</b>	14 <b>Book Fair</b>
17 <b>Presidents' Day Holiday</b> <b>(or Inclement Weather</b> <b>Make-up day)</b>	18 <b>FACULTY MEETING</b>	19	20	21
24	25	26	27	28 <b>BLACK HISTORY</b> <b>PROGRAM</b> <b>1:30</b>

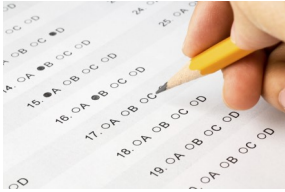


# March 2020



Mon	Tue	Wed	Thu	Fri
2 <b>READ ACROSS AMERICA</b> <div style="border: 1px solid black; padding: 5px; width: fit-content;">             Day Lights Savings...              Spring forward 1 hour on              Sunday, March 8th           </div>	3	4	5	6
9	10 <b>REPORT CARD OPEN</b>  <b>FACULTY MEETING</b>	11	12  <i>3rd Quarter Ends</i>	13  <i>Professional Learning Day (or Inclement of Weather Make-up day)</i>
16  <b>REPORT CARD CLOSED</b>	17  <b>REPORT CARDS HOME</b>	18	19  <b>SPRING PICTURE DAY (REGULAR CLOTHES)</b>	20  <b>PBIS Celebration</b>
23  <i>Pre K - 2nd Grade Conferences</i>	24  <i>Pre K - 2nd Grade Conferences</i>  <b>FACULTY MEETING</b>	25  <i>Pre K - 2nd Grade Conferences</i>	26	27  <b>CLASSROOM AWARDS</b>
30	31			





# April 2020



Mon	Tue	Wed	Thu	Fri
		1	2	3 <i>SPRING FLING</i> <i>1:30</i>
6	7	8 <i>Spring Break</i>	9	10
13	14 <i>PROGRESS REPORT</i> <i>OPEN</i> <i>FACULTY MEETING</i>	15	16	17 <i>GMAS PARTY</i> <i>1:30 Auditorium</i>
20 <i>PROGRESS REPORT</i> <i>CLOSED</i>	21 <i>PROGRESS REPORT</i> <i>HOME</i> <i>FACULTY MEETING</i>	22 <i>GMAS TESTING</i> <i>Administrative</i> <i>Professional/ Secretary</i> <i>Day</i>	23	24
27	28	29	30 <i>GMAS TESTING</i>	



# May 2020



Mon	Tue	Wed	Thu	Fri
			30	1 <i>School Principal's Day</i>
4	5 <i>FACULTY MEETING</i> <i>Teacher Appreciation Week</i>	6	7 <i>PBIS Celebration Week</i>	8
11 <i>Muffins with Moms</i>	12 <i>REPORT CARD OPEN</i>	13	14	15 <i>Field Day</i>
18 <i>PRE-K CELEBRATION</i>	19 <i>1st &amp; 2nd AWARDS 9am</i> <i>REPORT CARDS CLOSED</i>	20 <i>3rd &amp; 4th AWARDS 9am</i>	21 <i>Kindergarten Graduation</i>	22 <i>5th Grade Graduation</i> <i>REPORT CARDS HOME</i> <i>Last Day of School</i>
25	26	27	28	29
<i>Professional Learning Day/ Post Planning</i>				